

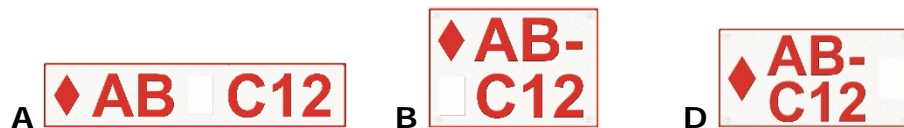


Regular license plates:



Regular license plates have a white reflective base, blue frame and blue characters. A lifted rectangle is for the inspection label. On the left side on all regular license plates, except type C, is the Icelandic national emblem.

Commercial license plates:



Commercial license plates have a white reflective base, red frame and red characters. A lifted rectangle is for the inspections label and a red, lifted diamond left off the letters.

Personalized license plates:



Personalized license plates have a white reflective base, blue frame and blue characters. There is a lifted rectangle for the inspection label.

Off-highway license plates:



Off-highway license plates have a white reflective base, green frame and green characters. There is a lifted rectangle and a green, lifted diamond left off the letters.

Diplomatic license plates:

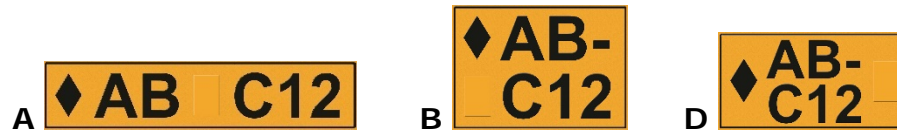




License plate variations

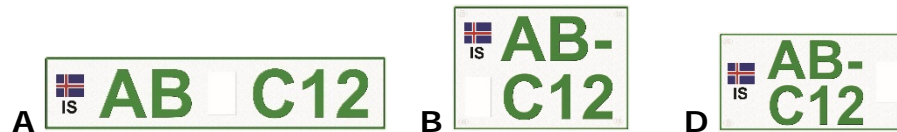
Diplomatic license plates have a green reflective base, white frame and white characters. The letters are CD and instead of the usual three numbers there are one letter and two numbers. There is a lifted rectangle for the inspection label.

Oil license plates:



Oil license plates have a dark yellow reflective base, black frame and black characters. There is a lifted rectangle and a black lifted diamond left of the letters.

Special license plates:



Special license plates have a white reflective base, green frame and green characters. A lifted rectangle is for the inspection label. On the left side on all special license plates, except type C, is the Icelandic national emblem.

Temporary license plates:



Temporary license plates have a red reflective base, black frame and black characters. There is a lifted rectangle for a label that shows the duration of the license plate.

Tractor license plates:



Tractor license plates have a white reflective base, blue frame and blue characters. There is no lifted rectangle for an inspection label.



Off-road license plates:



Off-road license plates have a red reflective base, white frame and white characters. There is no lifted rectangle for an inspection label

Moped plates I & II:



Moped plates I have an orange reflective base, white frame and white characters. Moped plates II have a blue reflective base, white frame and white characters. There is a lifted rectangle for the inspection label on moped plates II.

License plates for registration exempt trailers:



License plates for registration exempt trailers have the same color configuration as the license plates of the vehicle that it is attached to, but without a frame and no lifted rectangle for inspection label.

Customs license plates:



Customs license plates have four white numbers on a black background. On each side there shall be two letters in a vertical red line, for the month on the left side and the year on the right side, indicating the duration of the registration.